



# Endo Rescue | Kit 4601



## For the safe, effective removal of instrument fragments.

Instrument fracture during endodontic treatment can be an exceptionally stressful occurrence. Traditionally, the removal of fragments has been nearly impossible to plan and extremely difficult to execute. In addition to the dentist's challenge of effectively removing the fragment, the event can lead to an increased risk of post-endodontic complications for the patient.

The Komet® Endo Rescue Kit has revolutionized this procedure, making it predictably quick and simple. The kit provides access to the opening of the root canal, allowing fractured NiTi instruments to be readily removed.

Because instrument fracture is usually caused by incorrect or insufficient preparation of the canal access or the access cavity, the first step in the removal procedure is to correctly and precisely re-prepare the access by using conventional instrumentation.

- For enhanced vision, a size XXL endodontic bur with a non-cutting tip is recommended.

Once the canal opening has been relocated and access to the head of the fragment has been achieved, two specially designed instruments facilitate the removal procedure:

- A center drill excavates the last few millimeters, allowing access to the fragment.
- An extremely fine trepan bur is placed onto the fragment, which is then seized by the bur and held in place by dentinal residue.
- Counter-clockwise rotation is used to remove the fragment.

This easy-to-use instrument set is indispensable in emergencies

**Clinical sequence:**

1. Initial situation: Fragment of a fractured instrument in a mesial root.



2. Reshaping of the access cavity.

**H269GK.FGL.016** ⌚<sub>opt.</sub> 100.000 rpm

3. The coronal curvature is straightened through axial movements to create direct access to the fragment.

**G180A.RA.110** ⌚<sub>opt.</sub> 800 rpm

4. Preparation of the access right down to the fragment.

**G180.RA.090** ⌚<sub>opt.</sub> 800 rpm

5. The fractured surface is exposed by drilling around the fragment.

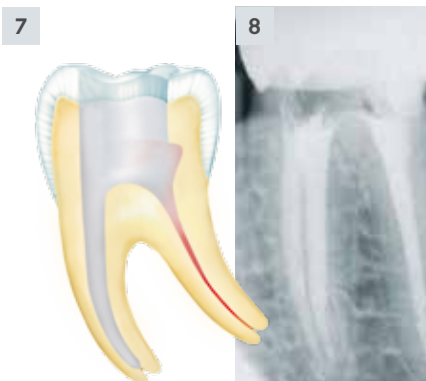
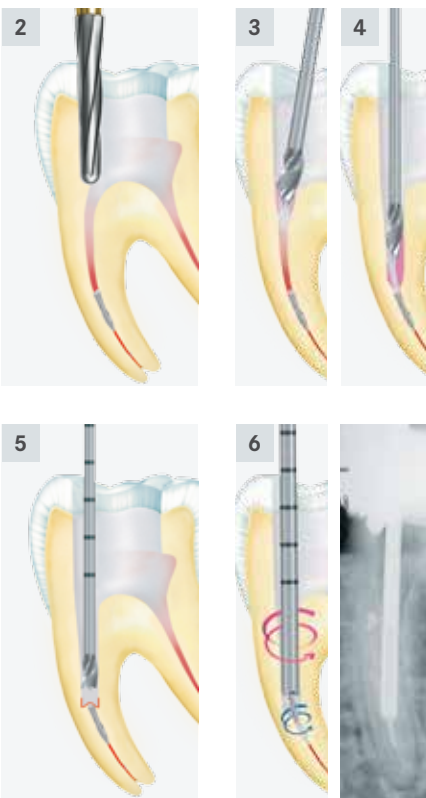
**RKP.RA.090** ⌚<sub>opt.</sub> 300 rpm

6. The fragment is surrounded and seized. A counter-clockwise rotation removes the fragment, which is firmly held in the trepan bur by residual dentin.







**RKT.RA.090** ⌚<sub>opt.</sub> 300 rpm

7. The remaining third of the canal can now be properly prepared.




8. Final situation after filling.






**Endo Rescue Kit 4601**

-  **H269GK.FGL.016**
-  **G180A.RA.110**
-  **G180.RA.090**
-  **RKP.RA.090**
-  **RKT.RA.090**
-  **150.155.000**

**Also available in size 070:**

-  **G180.RA.070**
-  **RKP.RA.070**
-  **RKT.RA.070**

**Also available in size 110:**

-  **G180.RA.110**
-  **RKP.RA.110**
-  **RKT.RA.110**

